

Education caveat

- The following content has been designed and relies upon the detailed explanation provided by the presenter at the time of the seminar and should be considered in conjunction with this and not in isolation.
- All copyright or other intellectual property rights in the material constituting this presentation which has been provided by Wealth at Work Limited remains the property of the Wealth at Work group of companies.
- The content of this presentation is provided for illustrative purposes only and is not intended to be used for individual investment or financial planning and does not constitute financial advice.
- Whilst every effort is made to ensure the accuracy of information contained in the presentation it cannot be guaranteed. In particular the rules relating to tax can frequently change. Wealth at Work Limited will not be held liable for any inaccuracies in this presentation due to a change in law after the date of delivery of this presentation.
- Any references to tax or the operation of tax or tax reliefs are illustrative only and the tax treatment in respect of any individual depends upon the circumstances of each individual.
- It is important to recognise that the value of investments related to the stock market (and any resulting benefits such as interest or dividends), can rise or fall and an investor may not get back the amount invested. Past performance data used is for illustrative purposes only and is not necessarily a guide to future performance.
- Any hyperlinks or references to third parties or their websites are provided for information only and it does not mean that we endorse their products or services. We have no control over these and accept no legal responsibility for any content, material or information contained in them.

WEALTH at work and my wealth are trading names of Wealth at Work Limited which is authorised and regulated by the Financial Conduct Authority and part of the Wealth at Work group. Registered in England and Wales No. 05225819. Registered Office: Third floor, 5 St Paul's Square, Liverpool L3 9SJ. Telephone calls may be recorded and monitored for training and record-keeping purposes.

Total Reward Benefits



About us

WEALTH at work is a leading financial wellbeing, retirement and workplace savings specialist.

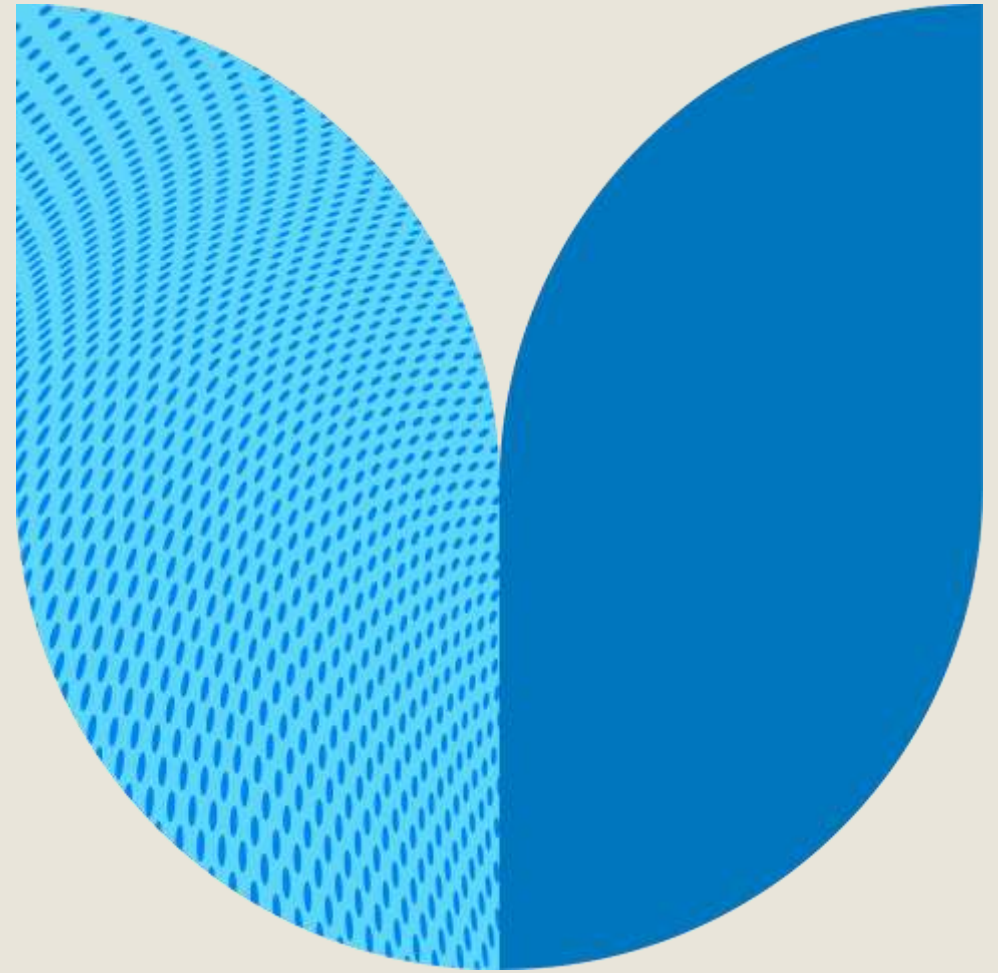
Established in 2005, we work with hundreds of organisations across both the private and public sector.

Our financial education services are delivered on a bespoke basis.

What we'll cover today

- Understanding salary sacrifice
- Share reward
- Share save
- GSK Pension Plan
- GSK Healthcare Plan
- Tax efficient plans
- Total Reward discounts
- Achieving goals
- Next steps

Understanding salary sacrifice



Rates of income tax

Personal Allowance
on the first
£12,570*



>£12,570*

Basic Rate Tax
on the next
£37,700



>£50,270

Higher Rate Tax
on the next
£74,870



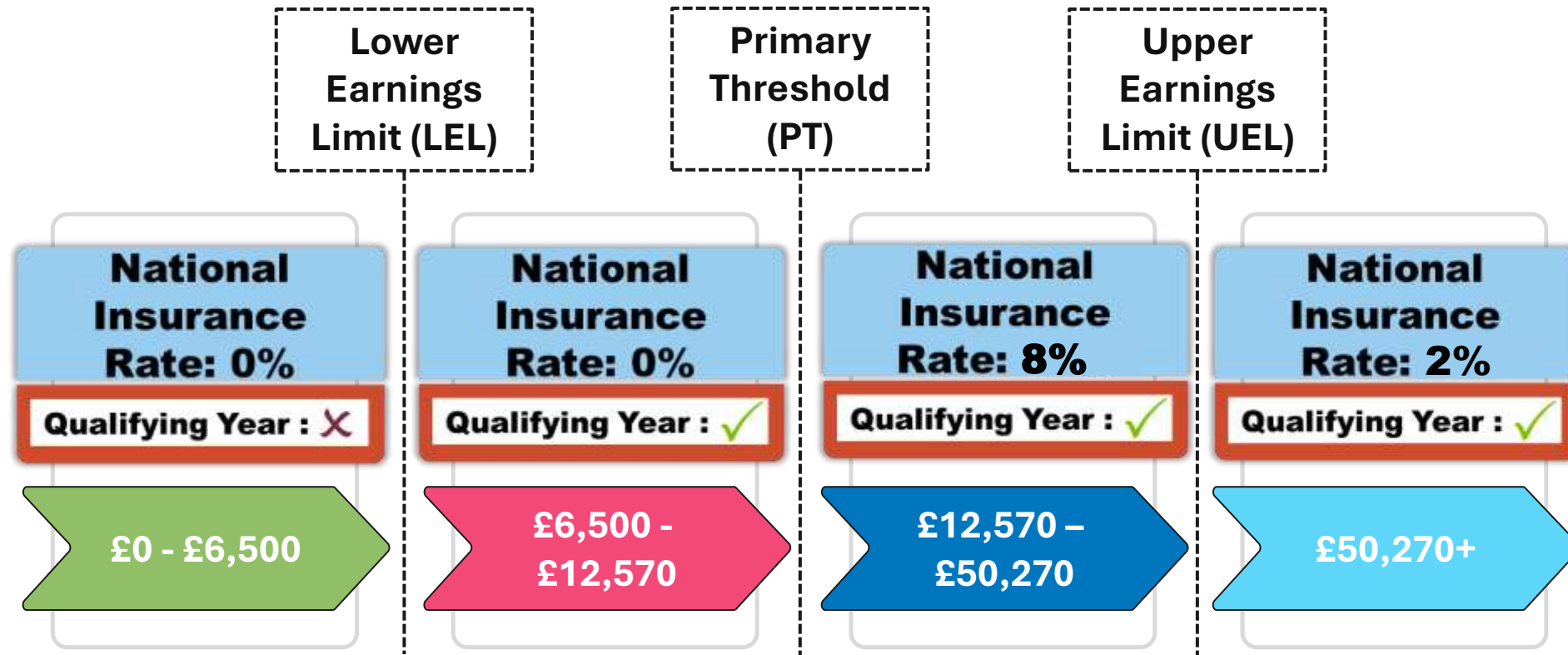
>£125,140

Additional Rate Tax
on earnings above
£125,140



*The Personal Allowance reduces by £1 for every £2 of income above £100,000.

National Insurance



Salary sacrifice



You save:

**Basic-rate
Taxpayers
up to 28%***

- Saving made up of:
- 20% income tax, &
 - 8% NI

**Higher-rate
Taxpayers
up to 42%***

- Saving made up of:
- 40% income tax, &
 - 2% NI

* Tax relief on pension contributions is limited to the greater of 100% of relevant earnings and £3,600.

Salary sacrifice

Example - Basic Rate Taxpayer

- Earning £30,000 per year, £2,500 per month
- Wants to buy benefits worth £200 per month

Without Salary Sacrifice		With Salary Sacrifice	
Gross Pay	£2,500	Reference Pay	£2,500
Less Tax & NI	£407	Less Cost of Benefit	£200
Less Cost of Benefit	£200	Gross Pay	£2,300
Net Pay	£1,893	Less Tax & NI	£351
		Less Cost of Benefit	N/A
		Net Pay	£1,949

- Salary sacrifice has saved the employee £56 for the month, that's £672 per year

Salary sacrifice

So how much could you save?

- It depends on:
 - What tax you pay, &
 - How much of your salary you sacrifice

What benefits can reduce both tax and National Insurance costs?

- Pension contributions
- Share Reward contributions
- Bikes via the 'Tax-free: Bike' scheme
- 'Tax-free Holiday'

Shares and savings & health and life



Shares and savings & health and life

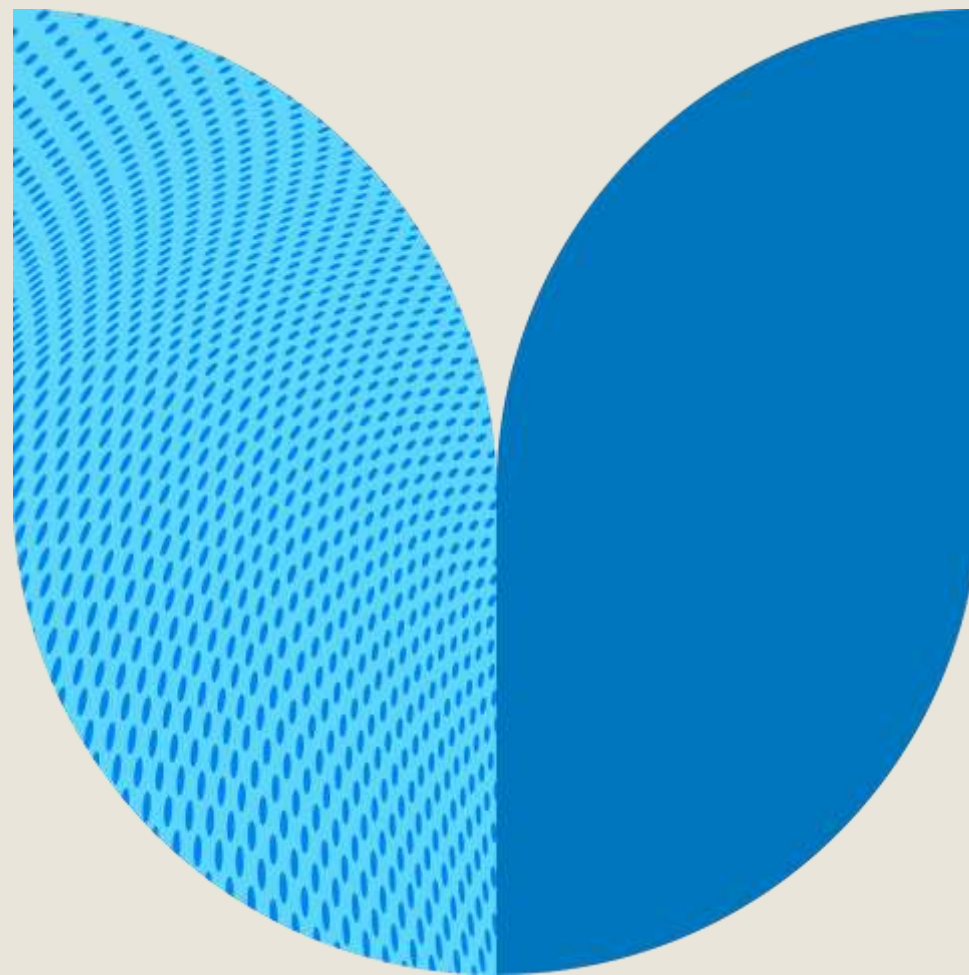


- Share Reward
- Share Save
- GSK Pension Plan









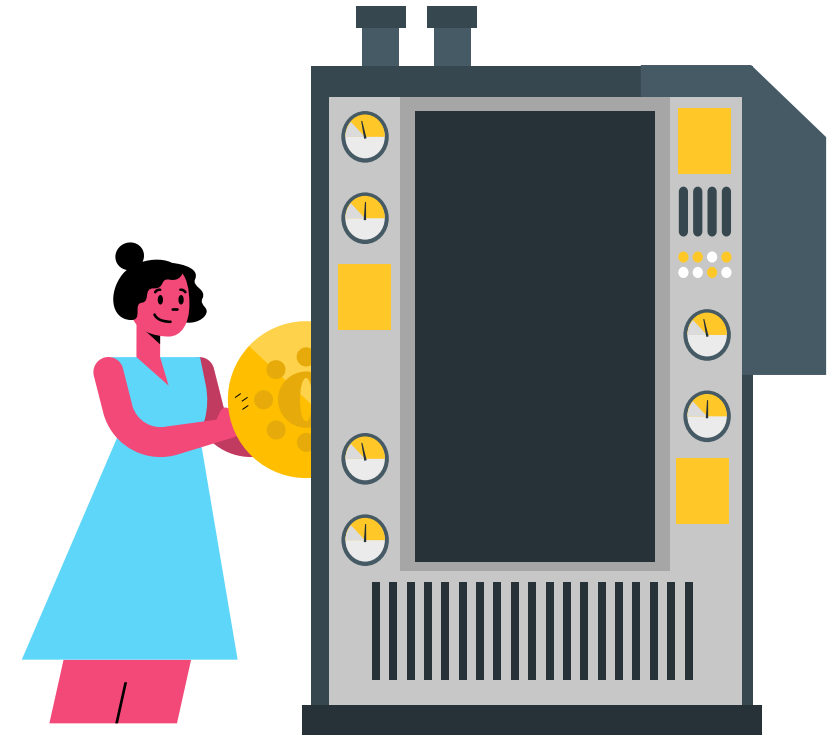
- Healthcare Plan
- Total Reward Discounts
- Tax-free: Bikes
- Tax-free: Holiday
- Tax-efficient: EV vehicle

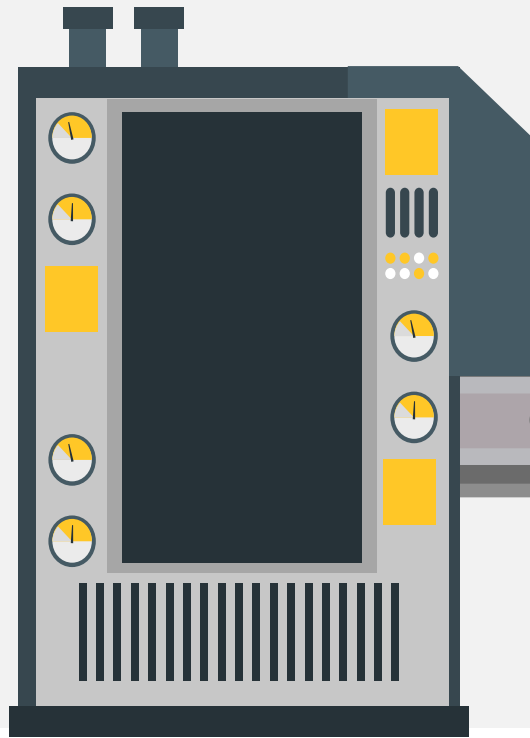
Share reward



Share reward

-  Contribute 10% of salary up to £125 pm
-  1 free share for every share you buy
-  Savings on Income Tax and National Insurance
-  Dividends can buy dividend shares or can be paid as cash
-  Shares can be sold tax free after 5 yrs (dividend shares 3 yrs)
-  Shares can be transferred to an ISA, or sold and the proceeds transferred to a SIPP subject to HMRC limits





£125

Invested

£125

Reward shares

£35

Tax and NI saving (28%)

£90

Personal cost



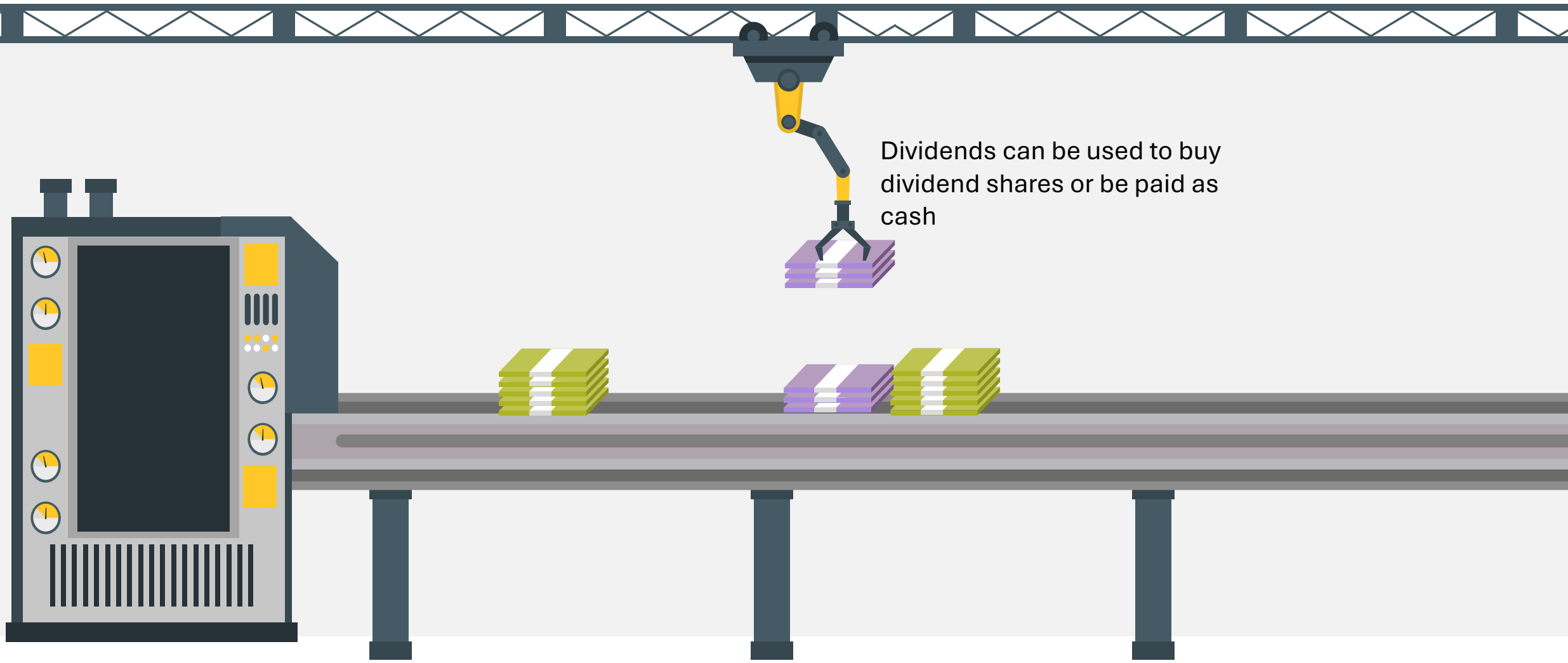
£250

Total Invested



WEALTH at work

part of the Wealth at Work group



Dividends can be used to buy dividend shares or be paid as cash

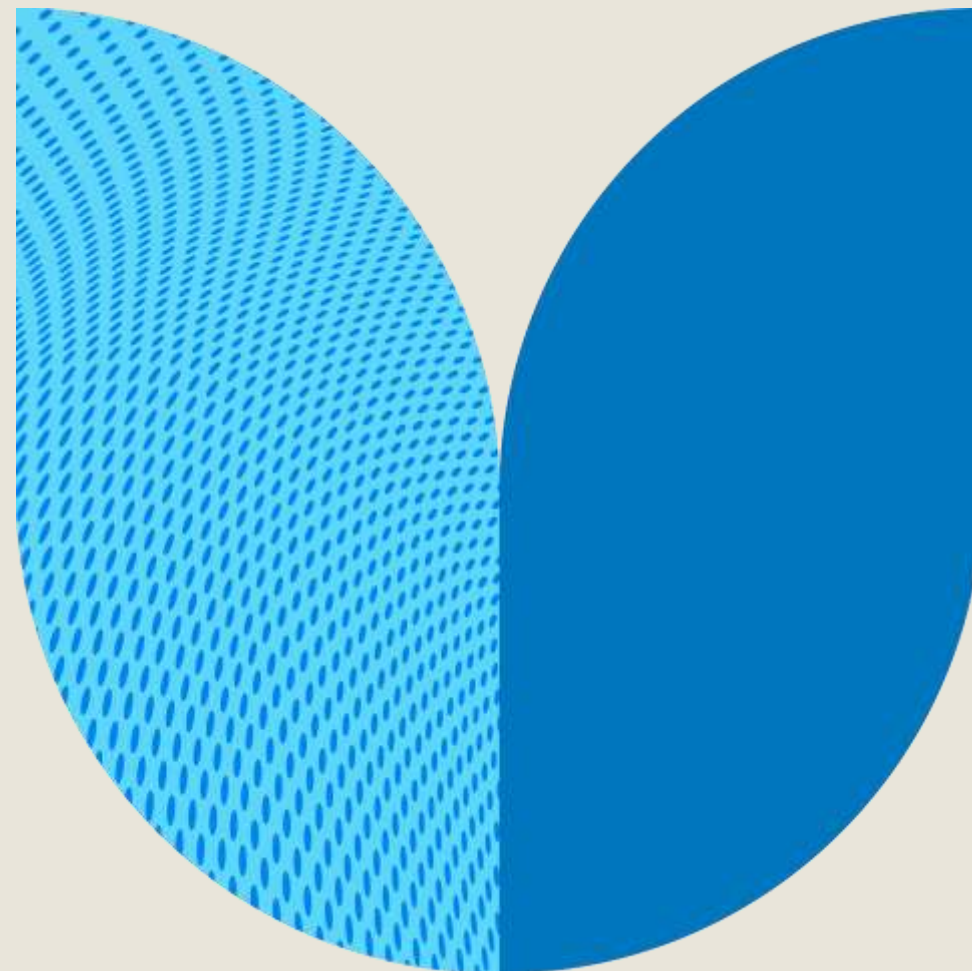
Access dividend shares tax-free or
leave them in the scheme



Access investment and reward shares
tax-free or leave them in the scheme



Share save



Share save

Save between £5
and £250 per
month

Option price is
set at the start of
the term and will
be 20% below the
share price at
that time

At the end of the
term, buy shares
or take savings
tax free*

Save for a 3 year
period

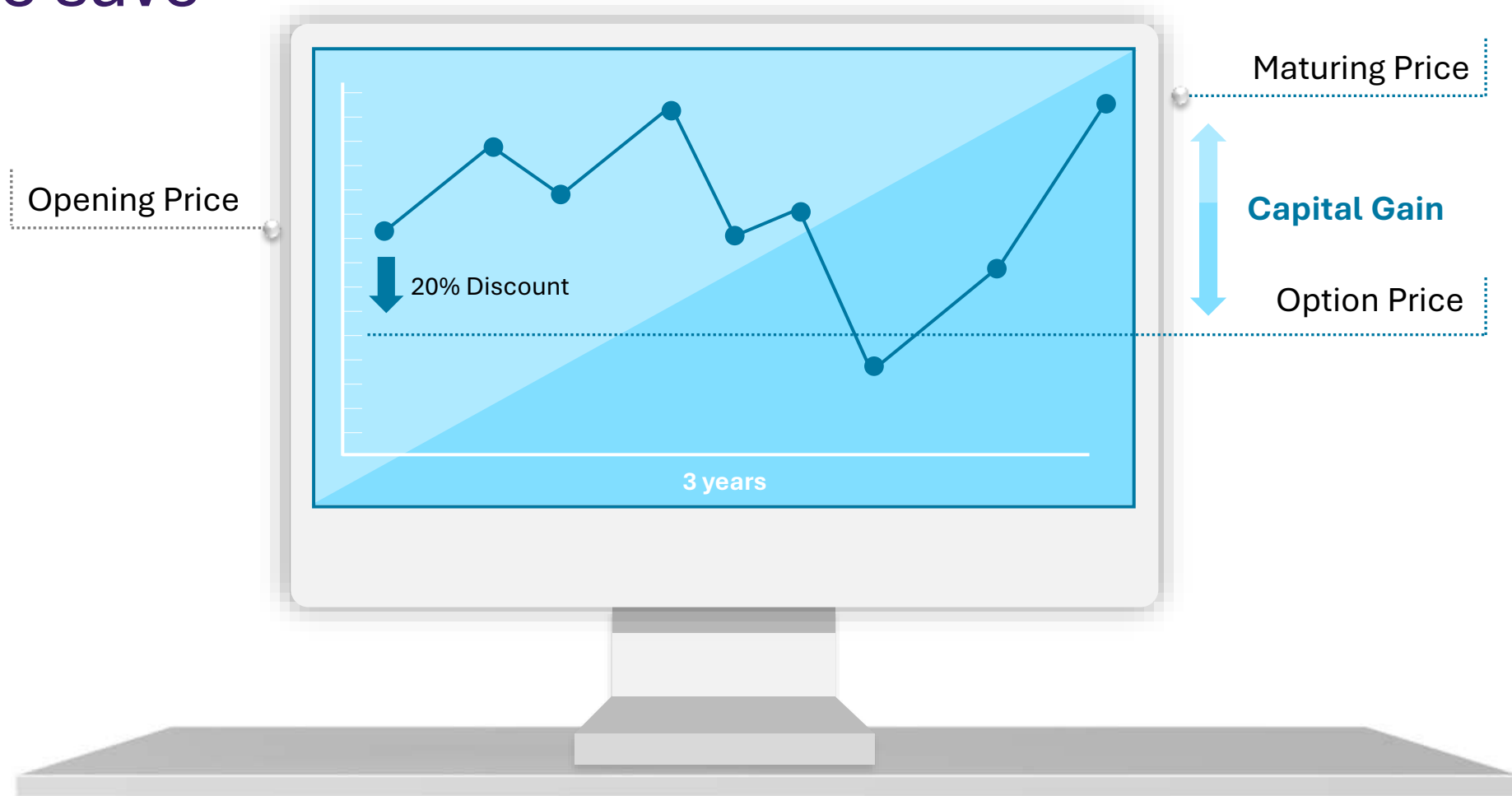
Possible tax free
bonus at the end
of the contract

Shares can be
transferred to an
ISA or SIPP**

*Your option can be exercised anytime within 6 months from the end of the term

**Subject to HMRC limits. The L&G SIPP and Equiniti ISA are provided for this purpose.

Share save



For illustrative purposes only

Share save options

Exercise Option
and receive
shares
immediately

Exercise Option
and sell shares
immediately

Exercise Option
and transfer
shares into an
ISA or SIPP*

Close Share
Save account
and obtain
repayment of
savings plus
bonus (if
applicable)

*Subject to HMRC limits

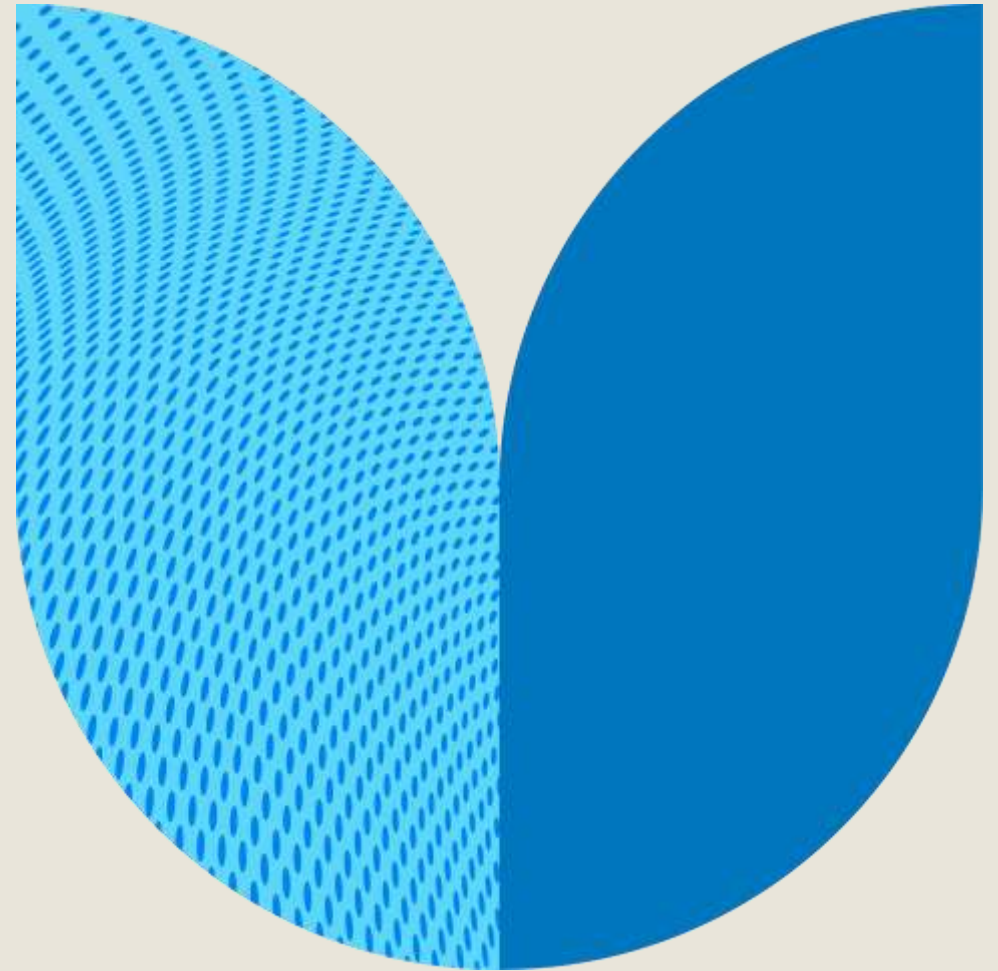
Information on GSK share plans



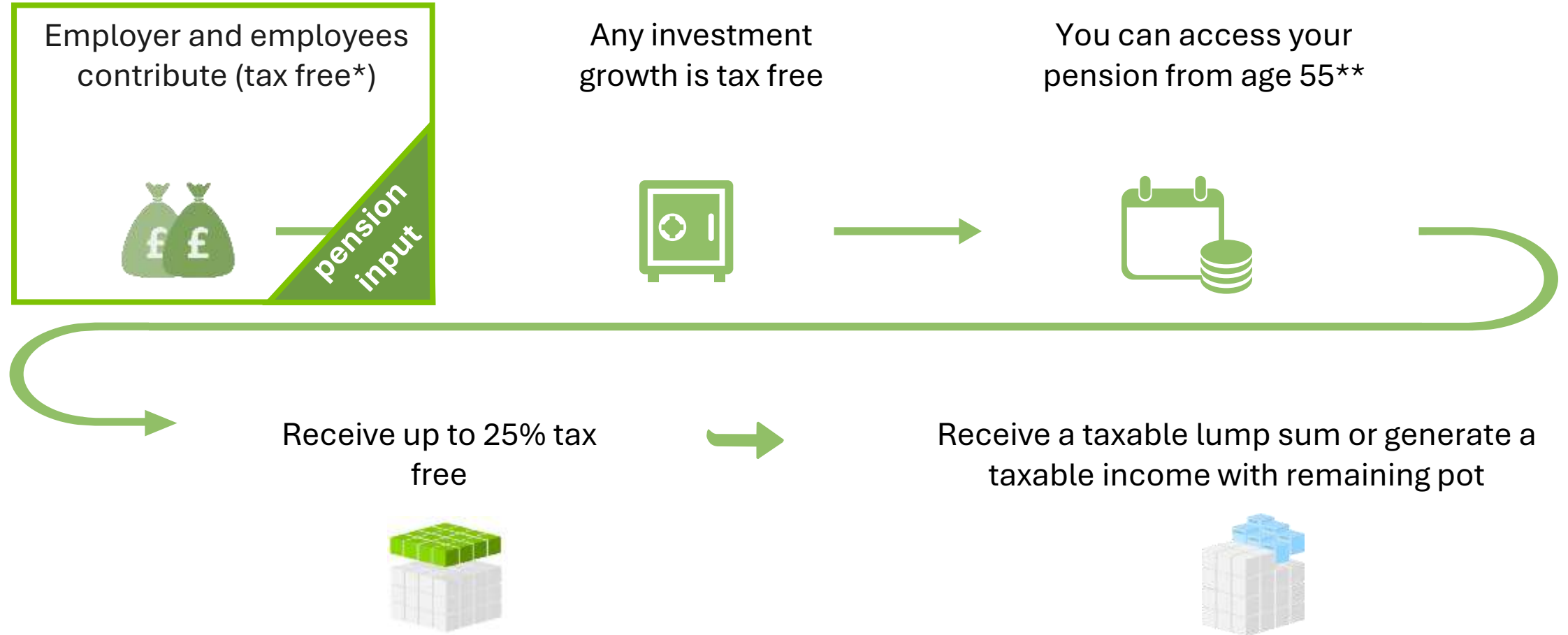
Find webcasts and further information about GSK share plans by visiting Total Reward online, clicking Quick Links and selecting Financial Education

You can also attend the upcoming seminars:
'Get more' from your GSK share plans and pensions
&
'Get more' from your GSK Share Save

GSK pension plan



Defined contribution (DC) schemes



*subject to HMRC limits

**The minimum age for accessing your pension is expected to increase to age 57 from 6 April 2028. Pension savings in certain schemes may be protected from this change.

GSK pension plan

Contributions				
GSK core contribution	Employee contribution	Your matching contribution	GSK's matching contribution	Total
7%	2%	0%	0%	9%
7%	2%	1%	1%	11%
7%	2%	2%	2%	13%
7%	2%	3%	3%	15%



Contributions are paid via Salary Sacrifice

Salary sacrifice

Annual Salary = £30,000 (basic rate tax payer)


Employee Contribution = £1,500pa (5%)

Tax Saving = 20%

NI Saving = 8%

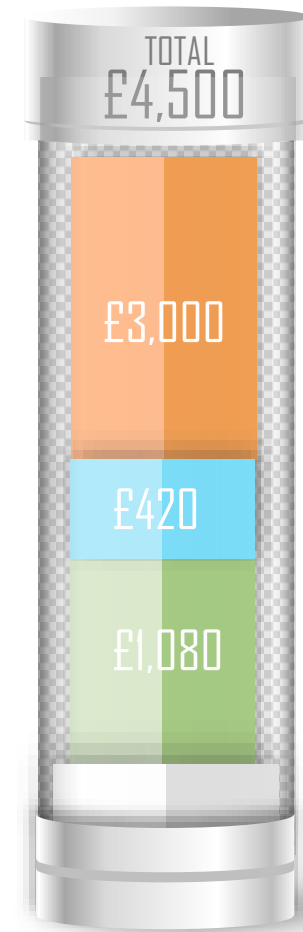
Personal Cost = £1,080pa

Employer Contribution = £3,000pa (10%)

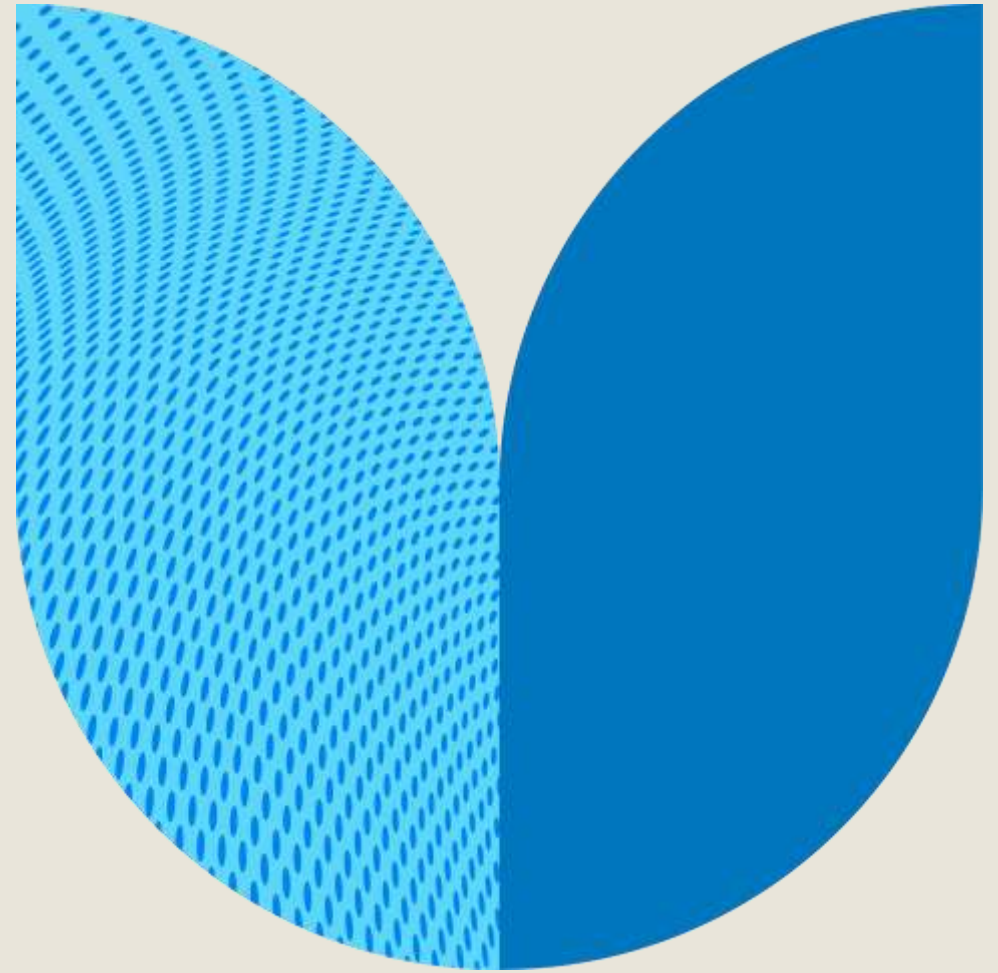
 Employer matching contribution (10%)

 Tax & NI savings (28%)

 Employee contribution (5%)



GSK healthcare plan



GSK healthcare plan

The company pays the cost of your membership and the cost of including your family members if you are Grade 5 or above. AXA health is the insurance provider.

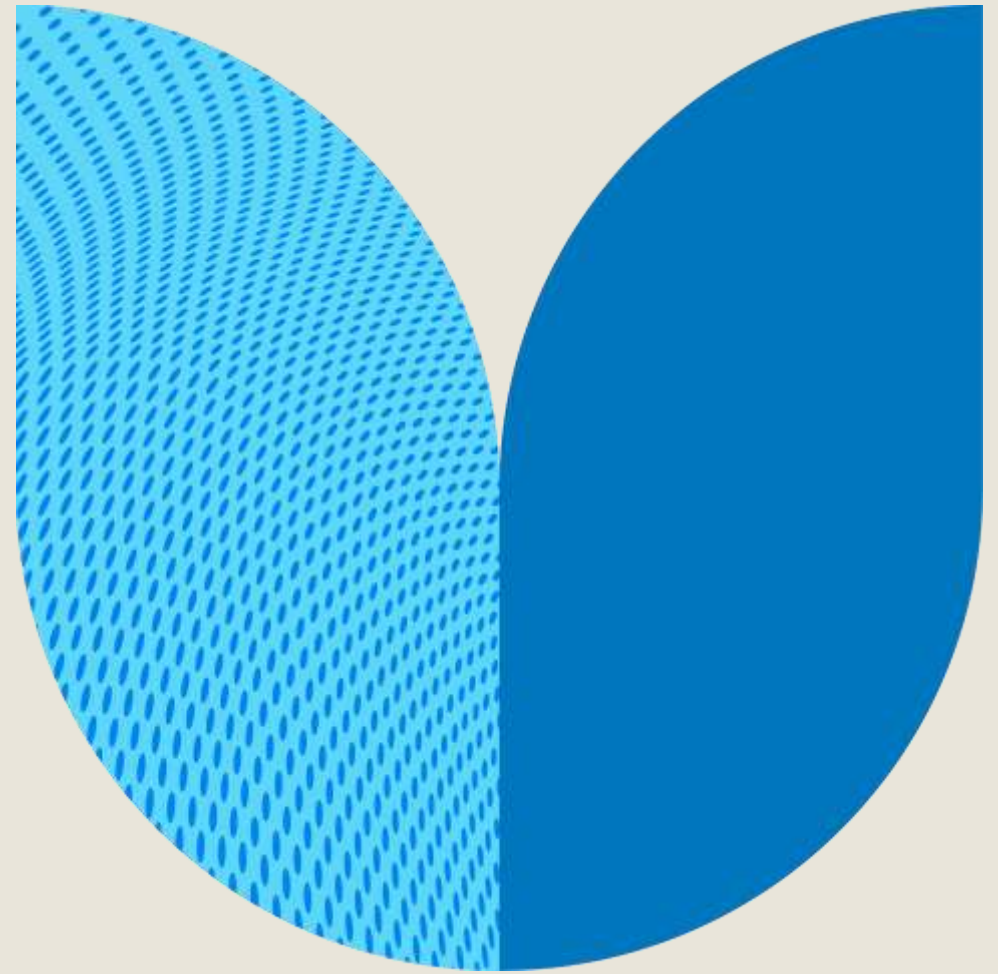
If are Grade 6 or lower, you can include your family members in your membership at your own cost.

There is no need to provide medical history as under the new healthcare plan, medical history is disregarded. You will also get an opportunity to get virtual GP support.

You can enrol during the annual enrolment window. If you are a new employee you have 35 days from your start date to enrol. Existing employees have 90 days following a life event to update cover.

Member pays 15% of the treatment and costs up to a maximum amount of £375 for each person in a plan year (April to March).

Tax efficient plans



Tax-free: plans



Tax-free: Holiday

Exchange part of your salary for extra holiday
You can buy up to an additional 10 days of holiday each year



Tax-free: Bikes

Up to a maximum value of £5,000
Can be used to pay for a bike and accessories
Deductions made from monthly salary before tax or NI

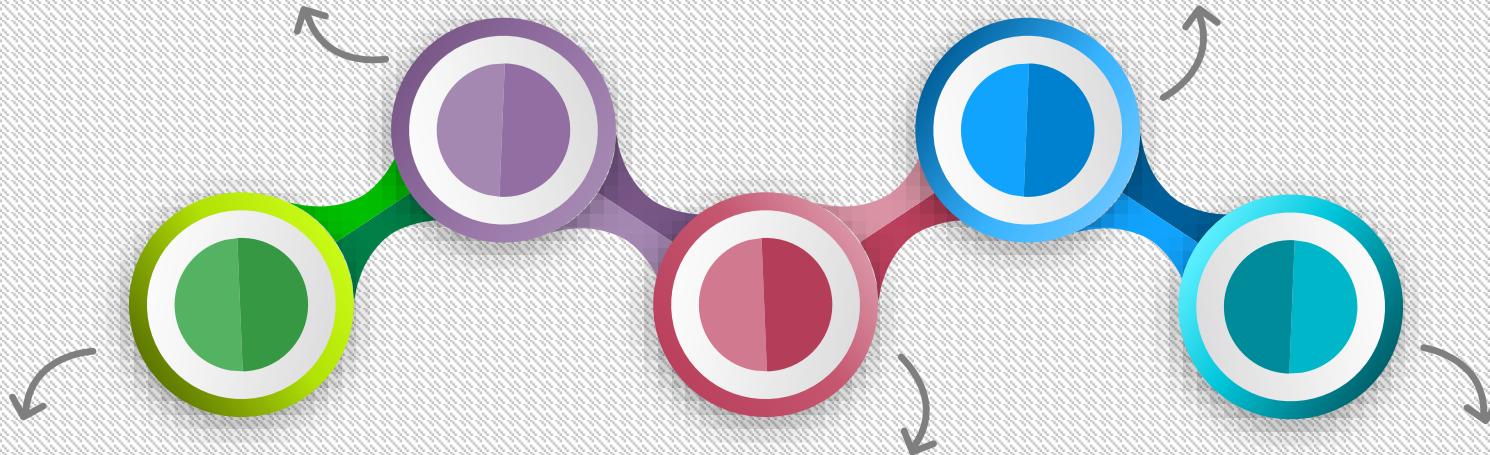
The cost of the benefits above are paid for via salary sacrifice.

Salary sacrifice EV plan

GSK is providing an electric vehicle plan through LeasePlan as an optional benefit.

Benefit In Kind: BIK tax is applied to the value of the vehicle, currently at 2%*

Protection: Early termination insurance and accident management support included



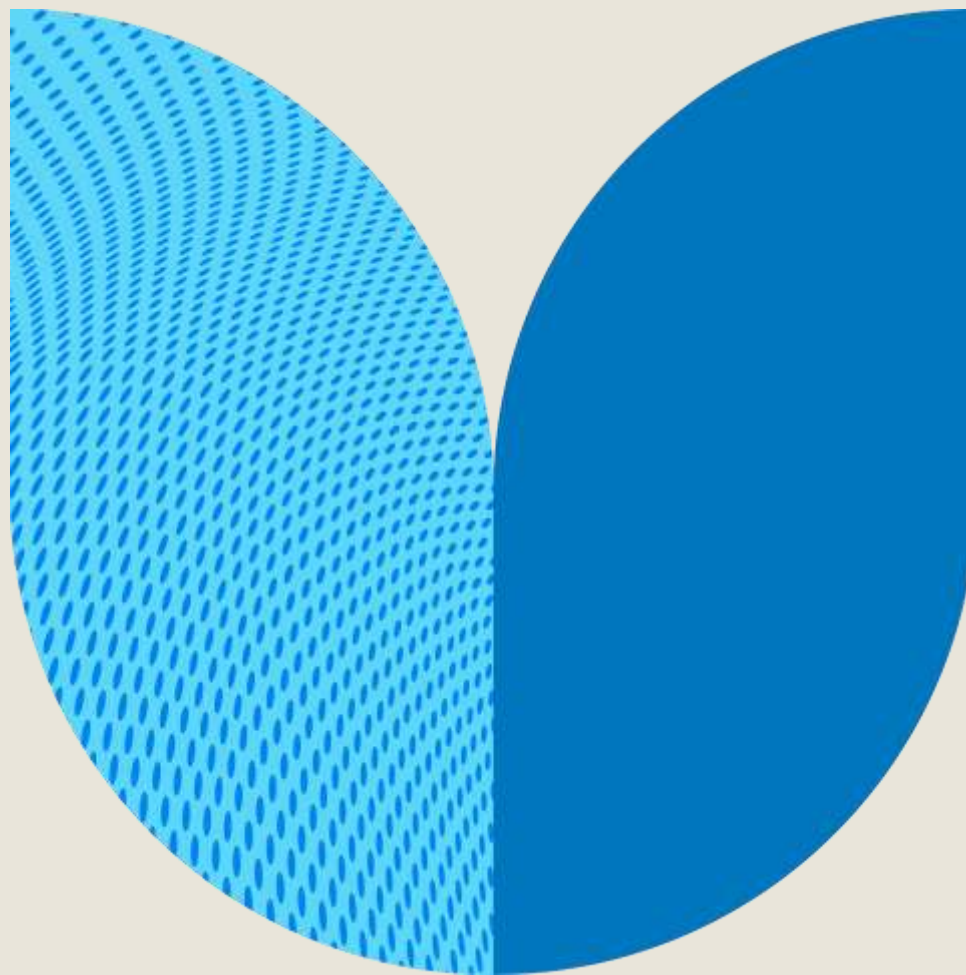
Salary sacrifice: Pay for the vehicle monthly with your gross pay, saving on tax and National Insurance

All expenses covered: Including road tax, insurance, and maintenance. Option to add a home charging point

Range of vehicles: From city cars to family SUVs

*from April 2025, the BIK rate will increase by 1% every year until it hits 7% in 2028, then increasing to 9% in 2029.

Total reward discounts



Saving money

- Total Reward Discounts offers a range of discounted products and services
- Discounts include:
 - Flights and holidays
 - Insurance
 - Gym membership
 - Electronics
 - Fashion
- The level of discounts offered varies between retailers
- Visit Total Reward online to view the full range of discounts

Saving money – case study

— Sally’s regular spending includes



— £300 per month (£3,600pa) on supermarket shopping



— £50 per month (£600pa) on clothes

— Sally has also spent the following this year



— £300pa on jewellery



— £400pa on DIY

What savings has Sally missed out on?



Sainsbury’s



$$£3,600 \times 5\% = £180$$

$$£600 \times 8\% = £48$$



House of Fraser



Ernest Jones



$$£300 \times 10\% = £30$$

$$£400 \times 4\% = £16$$



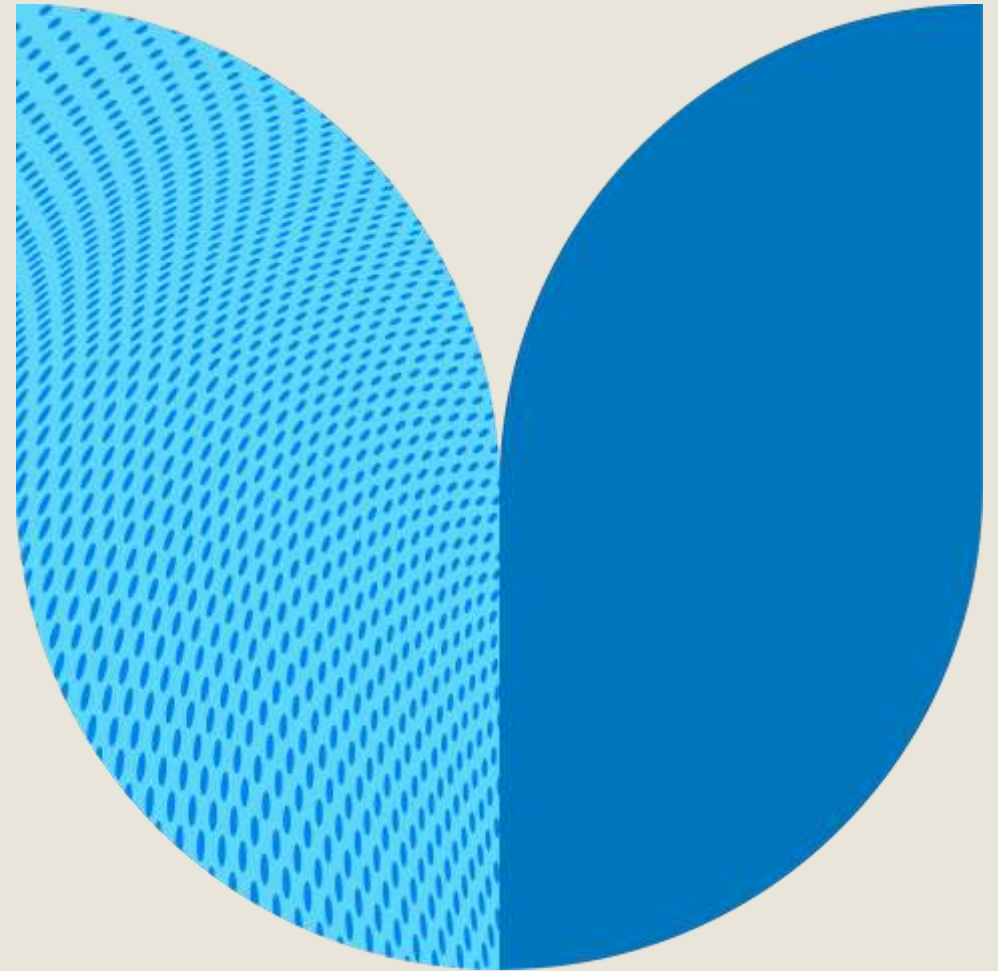
Wickes



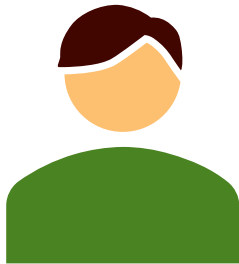
Total = £274

Discounts shown are examples only and are subject to change

Achieving goals



Your goals and GSK total reward



27 years old

- Just joined GSK
- Has a number of short and medium term goals to consider, including getting married in 3 years and buying a first home
- How can these goals be achieved utilising GSK Total Reward?

Your goals and GSK total reward

Need: I'm getting married in 3 years & I'm also saving for a deposit for my first home

Solution:

- GSK share save proceeds
- GSK Total Reward Discounts

Need: I'm taking on more financial commitment than I have ever had before. How can I protect myself?

Solution:

- Life Assurance for GSK Pension Plan members
- GSK Healthcare Plan
- GSK Sick Pay for long term absent employees

Need: I understand that retirement is a long time in the future. However I would like to retire before my state pension age of 68.

Solution:

- GSK Pension Plan
 - Maximum matched contributions
 - Benefit from salary sacrifice

Your goals and GSK total reward



50 years old

- Has been working at GSK for many years
- Has children who are growing up but still financially dependent
- Considering how to support their family whilst saving for retirement
- How can these goals be achieved by utilising GSK Total Reward?

Your goals and GSK total reward

Need: My children will soon be attending university and I want to help them avoid getting into debt.

Solution:

- GSK share save used on a rolling basis
- GSK Total Reward Discounts

Need: I'm getting older and my lifestyle is better now than in my early career. How can I protect myself against unforeseen life events?

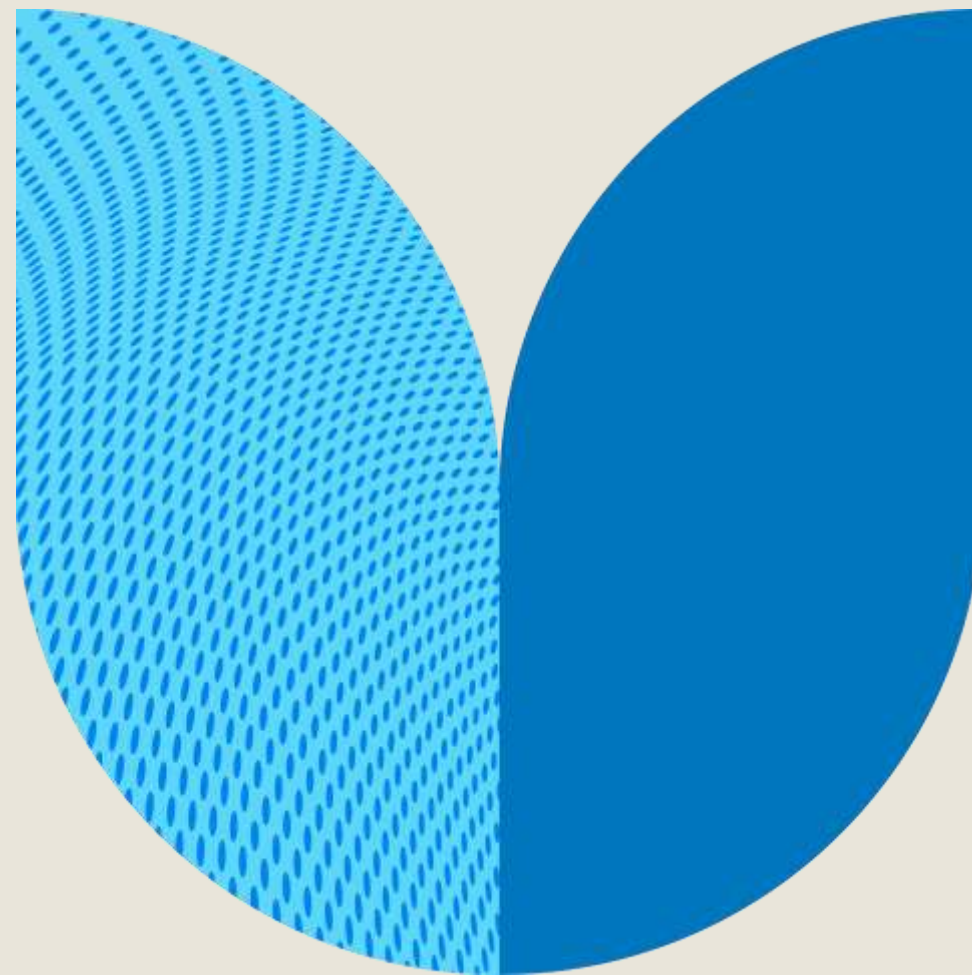
Solution:

- Life Assurance for GSK Pension Plan members
- GSK Healthcare Plan
- GSK Sick Pay for long term absent employees

Need: I realise I need to start focusing more on saving for my retirement. How can I use GSK Total Reward to increase my pension?

Solution:

- GSK Pension Plan
 - Maximum matched contributions
 - Benefit from salary sacrifice
- L&G SIPP
 - proceeds from GSK share plans



Next steps

Further information and guidance

The screenshot displays the GSK Total Reward portal interface. At the top, the GSK logo is on the left, and the title "Total Reward" is centered. To the right of the title are several utility icons: a "VALUES" toggle switch, a help icon, a shopping cart, a notification bell with a red "1", and a user profile icon. Below the title bar is a navigation menu with links for "Home", "Benefits", "Total Reward Statement", "Financial Fitness", and "Quick Links". The main content area features a large banner with the GSK logo and "THRIVE GLOBAL" text, followed by the headline "Let's focus on our wellbeing" and a sub-headline "Welcome Adity". A vertical navigation menu is open on the right side, listing the following items: "GSK pension plans: WTW", "Share Reward/Share Save: Equiniti", "Long Term Incentives: Computershare", "AXA Health Wellbeing Hub/Member Login", "Advice and assistance: Optum", "Total Reward Discounts", "Financial Education: Wealth at Work", "Work + Family Space: My Family Care", and "LeasePlan UK". At the bottom left, there is a section titled "Total Reward Statement" with a circular progress indicator. To its right, a text block explains that the chart breaks down the full remuneration package. At the bottom right, a "Navigation" section includes a link for detailed navigation tips.

Your webcasts


The screenshot shows the WEALTH at work website. The header includes the logo, tagline 'KNOWLEDGE · EXPERIENCE · OPPORTUNITY', and contact information 'w w W Call us: 0800 028 3200'. A navigation menu contains 'HOME', 'YOUR SEMINARS & WEBINARS', 'YOUR WEBCASTS', 'FURTHER INFORMATION', 'NEWS', 'DB PENSIONS', and 'CONTACT'. A search icon is also present. The main content area features a dark blue banner with the text 'your webcasts.' Below this is a photograph of a person working at a desk with a laptop, a smartphone, and a coffee cup. To the right of the image, there is introductory text and a list of three webcasts: 'An Introduction to Total Reward', 'Pension Flexibilities', and 'The Annual Allowance & Lifetime Allowance'. A link to 'access tax fact sheets with 2021/22 tax year figures' is also provided. At the bottom, a 'Related Content' section displays three icons corresponding to the webcasts: a star for 'An Introduction to Total Reward Webcast', a line graph for 'Pension Flexibilities Webcast', and a padlock for 'The Annual Allowance & Lifetime Allowance Webcast'.

WEALTH at work
KNOWLEDGE · EXPERIENCE · OPPORTUNITY

w w W Call us: 0800 028 3200

HOME · YOUR SEMINARS & WEBINARS · **YOUR WEBCASTS** · FURTHER INFORMATION · NEWS · DB PENSIONS · CONTACT

your webcasts.



We recognise that for some of you, being able to access financial education material in your own time is important.

The webcasts support the learning from online seminars and webinars, and provide information about your GSK benefits and other key subjects which may help with your financial planning.




There are 3 webcasts for you to choose from.

Please click on the links below to learn more:

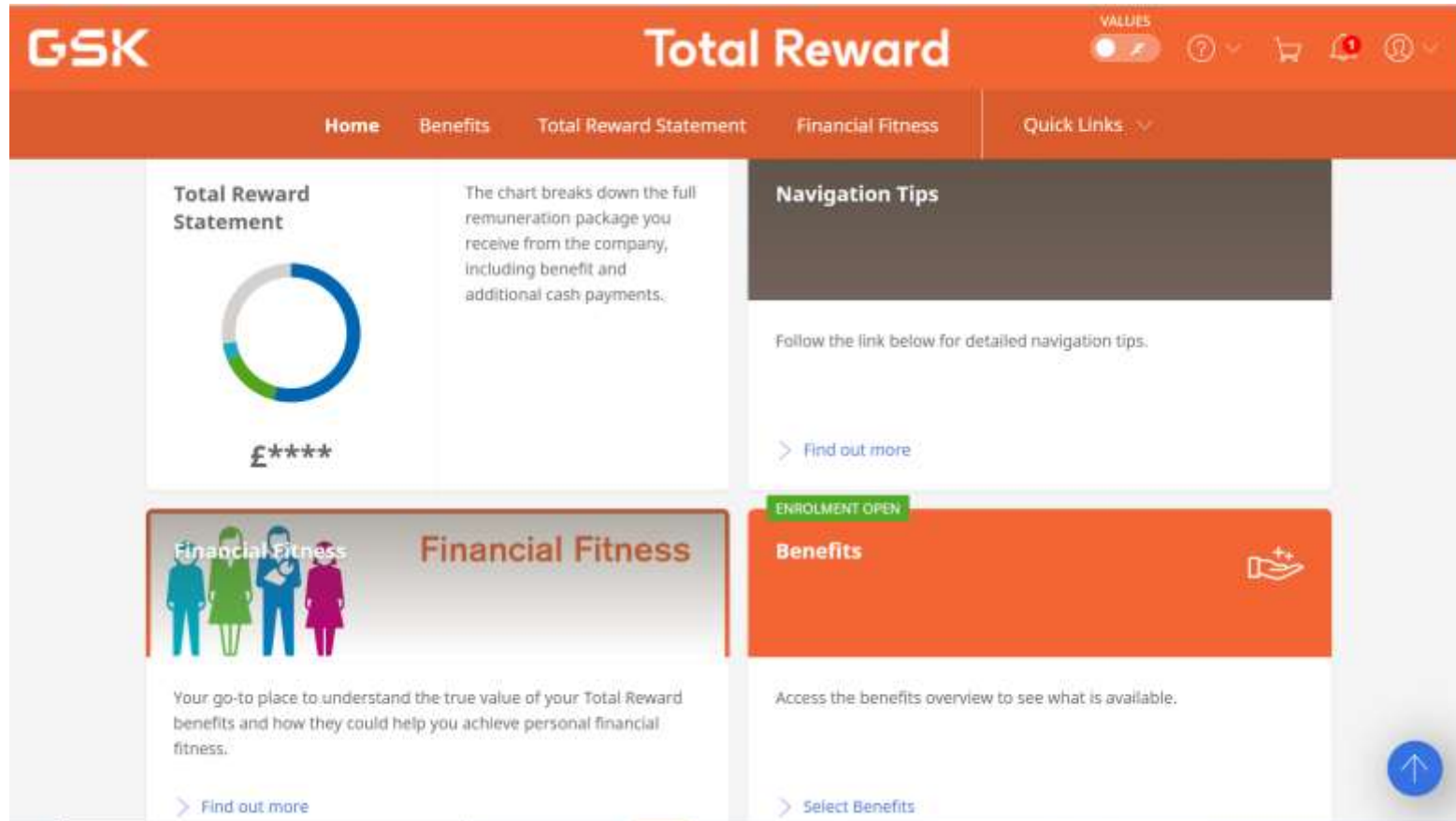
- [An Introduction to Total Reward](#)
- [Pension Flexibilities](#)
- [The Annual Allowance & Lifetime Allowance](#)

Please click to access tax fact sheets with 2021/22 tax year figures.

Related Content

-  [An Introduction to Total Reward Webcast](#)
-  [Pension Flexibilities Webcast](#)
-  [The Annual Allowance & Lifetime Allowance Webcast](#)

Further information and guidance



The Financial Fitness Hub is also available from Total Reward online. Clicking on the “Financial Fitness” tile will take you through to the Financial Fitness Hub.

Further information

Total Reward information on Connect GSK

Provides general information about how the Total Reward plans work.

Go to the UK HR page on Connect GSK.

Total Reward Online

The home of your personalised Total Reward information, where you enrol or make any changes to your Total Reward and can link to benefit administrator websites including WEALTH at work for financial education.

Go to www.totalrewardonline.co.uk from work or home using your MUD ID and password.

Questions About Your Total Reward Benefits

For any questions about your Total Reward, please contact ServiceNow

Further information and advice

Personal budgeting and setting goals

www.moneyhelper.org.uk

State Pensions, Income Tax and ISAs

www.gov.uk

www.hmrc.gov.uk

Financial Advice

Your existing adviser, Origen, Chase de Vere, my wealth

Seeking regulated financial advice

- Please note, this session provides education and information only and does not include or constitute financial advice.
- GSK has undertaken due diligence on Wealth at Work Limited in the provision of education and guidance services only. Wealth at Work Limited (trading as 'my wealth') offers regulated investment advice. GSK recommends that if you need regulated financial advice, such advice is available from a range of sources, details of which are available from the financial conduct authority at www.fca.org.uk. GSK is not endorsing nor has undertaken due diligence on Wealth at Work Limited (trading as 'my wealth') for the provision of regulated financial advice.
- Wealth at Work Limited trades as both 'my wealth' (when providing guidance and investment advice) and 'WEALTH at work' (when providing education).

WEALTH at work

part of the Wealth at Work group

Thank you

0800 028 3200

www.wealthatwork.co.uk/mywealth

